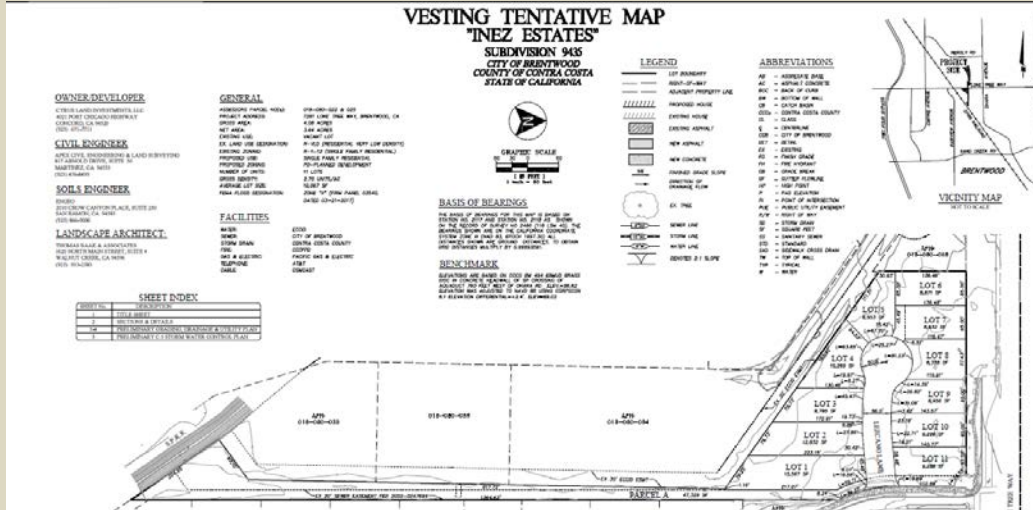


Inez Estates Subdivision

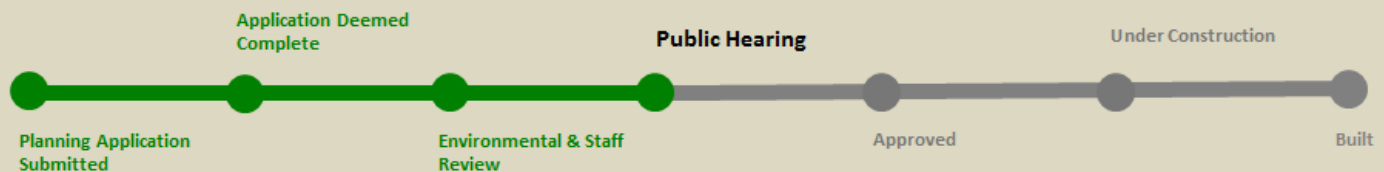
7281 Lone Tree Way



Description

A vesting tentative subdivision map (VTSM 9435) to subdivide 4.08 +/- acres to create 11 residential parcels. The application also includes a rezone (RZ 19-001) from Single-Family Residential (R-1-12) to a new Single family Residential Planned Development (PD-73), and an exception to General Plan Action LU2a (density transition), with the dedication of land in fee title for a public park trail, and a design review (DR20-008) for the 11 homes to be constructed on the project site. The project is located south of Lone Tree Way and west of Gann Street, and is identified by the following Assessor's Parcel Number: 018-080-022 and 018-080-025.

Status



Project Documents

[Project Narrative/Description](#)
[Vesting Tentative Map](#)
[Master Plotting Plan](#)
[Design Review Booklet](#)

[Preliminary Landscape Plans](#)
[Conceptual Trail Plan](#)
[Lot Development Standards](#)
[Draft Environmental Document- IS/MND](#)

Public Hearing

Planning Commission – TBD

Contact Information

Project Planner
 Crystal De Castro
 Associate Planner
 (925) 516-5127

cdecastro@brentwoodca.gov

Project Applicant
 Cyrus Land Development, LLC
 c/o Brian Kesler

(925) 671-7711

jseeno@seenohomes.com