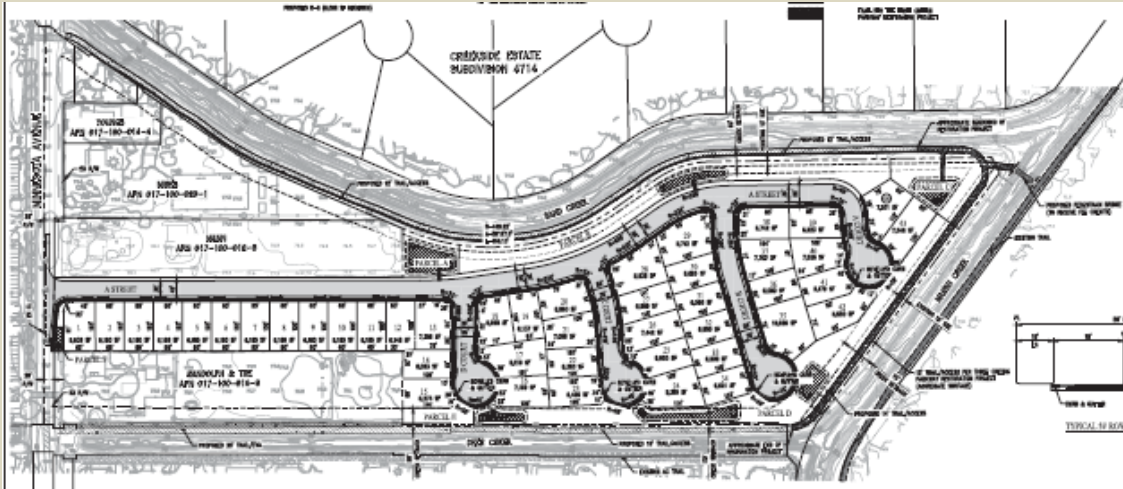


# Three Creeks

## 760 & 800 Minnesota Avenue

### Description



A rezone (RZ 20-005) from R-1-10 to R-1-6; a vesting tentative subdivision map (TSM 20-003) to create 44 single-family residential parcels; and a design review (DR 20-005) for three models of single-family homes and related improvements. The project site totals 13.92 acres and includes two parcels located at 760 & 800 Minnesota Avenue, between Randy Way and Central Boulevard.

### Status



### Project Documents

[Project Plans](#)

### Public Hearing

TBD

### Contact Information

#### Project Planner

Erik Nolthenius  
Planning Manager  
(925) 516-5137  
[enolthenius@brentwoodca.gov](mailto:enolthenius@brentwoodca.gov)

#### Project Applicant

DLT Ventures, LLC  
Anthony DeRusso  
(415) 879-9980  
[tderusso@indevelopmentpartners.com](mailto:tderusso@indevelopmentpartners.com)